



HOSHIZAKI AMERICA, INC.

SERVICE BULLETIN

SB11-0001

February 8, 2011

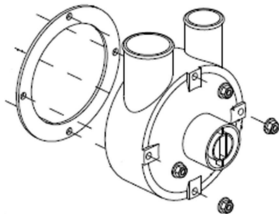
Page 1 of 1

Subject: Water Leaks On Service Replacement Pumps

KM service replacement pumps are assembled and run tested at the factory. The pumps are checked thoroughly for proper operation and leaks prior to packing for shipment. Although they are packaged tightly with foam inserts, they may get jostled in shipment. In some cases, a sharp jar to the package can cause the spring loaded mechanical seal to unseat and may allow the mechanical seal to leak on initial installation. Typically this might occur on the larger S-0730/0731 pump assembly because of the weight and size.

This leak can be easily remedied by reseating the mechanical seal. This procedure only takes a few minutes and can save the time and effort to return the pump. If this occurs, follow the procedure below to re-seat the mechanical seal and resolve the leaking issue. Be sure to notice the orientation of the pump housing on the pump motor. It may be helpful to place an alignment mark on the motor and housing before disassembly.

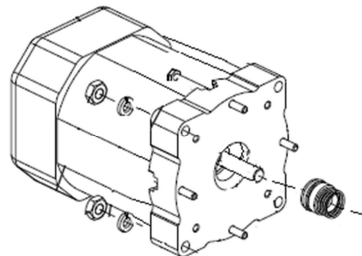
1. Remove the pump housing from the pump assembly by loosening and removing the housing bolts.



2. Remove the impeller by removing the pin and sliding it off the pump motor shaft.



3. Check to assure that the mechanical seal is sitting squarely in the pump flange. Pull the mechanical seal back on the pump motor shaft and reseat in the flange as necessary. No additional lubrication is required.



4. Re-assemble the pump assembly in reverse order assuring that the housing is in the original position. Install the pump and check for water leaks.

If you have any questions on the application or instructions for these kit please contact Technical Support at 1-800-233-1940.