



# HOSHIZAKI AMERICA, INC.

## SERVICE BULLETIN

**SB95-0007R**

**September 7, 1995**

Page 1 of 3

**SUBJECT: DB GEAR MOTOR CHANGE**

The DB gear motor assembly has been changed to a domestic supplier. This was necessary since the original Panasonic gear motor is no longer available.

We still have a small inventory of service replacement parts. When this inventory is depleted, the Panasonic gear motor will sub to a new gear motor assembly with mounting brackets.

A different assembly is necessary for each of the two DB models when converting to the new gear motor. To avoid confusion, always check the DB model and serial number when ordering the gear motor.

**For DB-130C units with a serial number up to D11140M** the gear motor will sub to assembly number **2A0443A02**.

**For DB-200C units with a serial number up to D13015L** the gear motor will sub to assembly number **2A0443A01**.

**DB-130C units with a serial number of D21071L (ALL D2's) and after and DB-200C units with a serial number of D13016J and after** have the new gear motor installed. To order a replacement gear motor for these units, **order part number 4A0183-01**.

The conversion instructions necessary to install the sub gear motor assemblies are part of the assembly and are included as part of this bulletin.

The new gear motor uses a larger 25 MFD capacitor part number 439943-02. If the capacitor fails, be sure to order the correct replacement. Panasonic gear motors use a 12 MFD part number 435648-01.

## DB-130C GEAR MOTOR CONVERSION

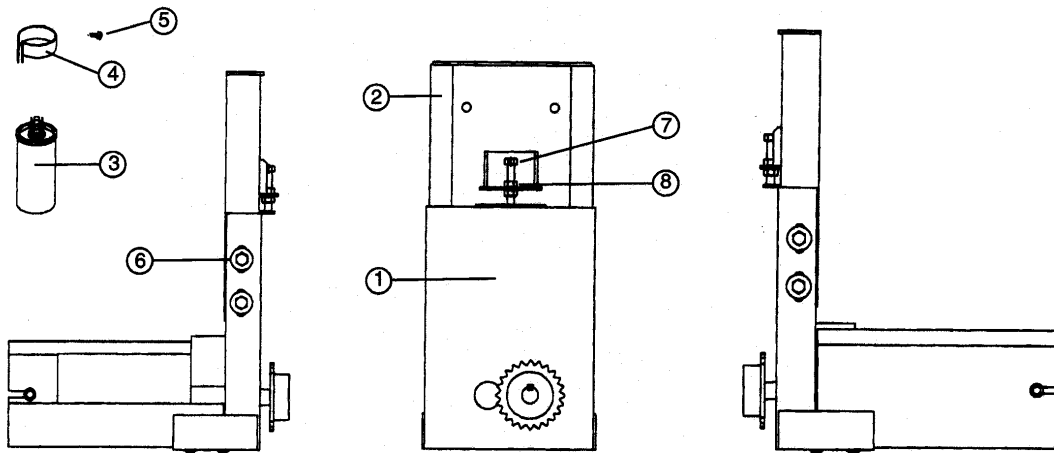
Gear Motor Number 323055-01 or Gear Motor Assembly 212971A01 are no longer available from the manufacturer.

These parts will convert early models to the new gear motor assembly:

PARTS LIST			
INDEX #	DESCRIPTION	PART #	REQ'D #
1	GEAR MOTOR ASSEMBLY	2A0443A02	1
2	GEAR MOTOR BRACKET (A)	2A0450G01	1
3	CAPACITOR 25 MFd 370 VAC	439943-02	1
4	STRAP	4A0506-01	1
5	TRUSS HEAD SCREW	4X12	1
6	HEX HEAD BOLT	8X20	4
7	HEX HEAD BOLT	8X45	1
8	HEX NUT	8 mm	1
9	WIRING LABEL	3A0404-01	1

### Conversion Steps

1. Unplug the power supply and remove the right Side Panel.
2. Remove the Chain, old Gear Motor Assembly and bracket from the unit.
3. Replace with the new Bracket (A) using the original mounting bolts and assemble the Adjustment Bolts (#7 & #8) per diagram.
4. Mount the new Gear Motor Assembly to Bracket (A) using the 4 (four) 8 mm x 20 mm hex head bolts (# 6).
5. Replace the Chain and adjust the assembly, allowing approximately 3/8" deflection in the chain. Lubricate chain if needed.
6. Remove the old 12MFd Capacitor and replace with the new 25 MFd Capacitor.
7. The electrical plug connection will match with the original plug. Plug it in.
8. Place the new adhesive Wiring Diagram Label over the old Label.
9. Plug in the power cord and check for proper operation.



## DB-200C GEAR MOTOR CONVERSION

Gear Motor Number 323055-01 or Gear Motor Assembly 212971A01 are no longer available from the manufacturer.

These parts will convert early models to the new gear motor assembly:

PARTS LIST			
INDEX #	DESCRIPTION	PART #	REQ'D #
1	GEAR MOTOR ASSEMBLY	2A0443A01	1
2	GEAR MOTOR BRACKET (A)	2A0450G01	1
3	CAPACITOR 25 MFd 370 VAC	439943-02	1
4	STRAP	4A0506-01	1
5	TRUSS HEAD SCREW	4X12	1
6	HEX HEAD BOLT	8X20	4
7	HEX HEAD BOLT	8X45	1
8	HEX NUT	8 mm	1
9	WIRING LABEL	3A0405-01	1

### Conversion Steps

1. Unplug the power supply and remove the right Side Panel.
2. Remove the Chain, old Gear Motor Assembly and bracket from the unit.
3. Replace with the new Bracket (A) using the original mounting bolts and assemble the Adjustment Bolts (#7 & #8) per diagram.
4. Mount the new Gear Motor Assembly to Bracket (A) using the 4 (four) 8 mm x 20 mm hex head bolts (# 6).
5. Replace the Chain and adjust the assembly, allowing approximately 3/8" deflection in the chain. Lubricate chain if needed.
6. Remove the old 12MFd Capacitor and replace with the new 25 MFd Capacitor.
7. The electrical plug connection will match with the original plug. Plug it in.
8. Place the new adhesive Wiring Diagram Label over the old Label.
9. Plug in the power cord and check for proper operation.

