

# Hoshizaki Dispenser Water Valve Kit

## HS-5749

### For Use with the Following Hoshizaki Dispenser: DB-130H and DB-200H Models

Check to ensure that all parts are included:

Index No.	Description	Part Number	Qty	Index No.	Description	Part Number	Qty
1	Water Valve	3B2121-01	1	5	Braided Hose Kit (includes items 5a, 5b, and 5c)	4A7686-01	1
2	Water Valve Bracket	4A7685-01	1	5a	3/8 × 3/8 6 ft. Braided Hose	-	1
3	Inlet Water Connection Bracket	4A4968-03	1	5b	3/8" Male × 3/8" Female Brass Fitting	-	1
4	Screw	7P32-0408	4	5c	3/8" Male × 1/2" Female Brass Fitting	-	1

### ⚠ WARNING

- Only qualified service technicians should install this kit to reduce the risk of death, electric shock, serious injury, or fire.
- No service should be undertaken until the technician has thoroughly read these instructions. Failure to follow these instructions will adversely affect safety, performance, component life, and warranty coverage and may result in costly water damage.
- Wear proper personal protection equipment (PPE) when executing these procedures.
- Appliance is heavy. Use care when lifting or positioning. Work in pairs when needed to prevent injury or damage.
- Protect the floor when moving the appliance to prevent damage to the floor.
- To reduce the risk of electric shock, do not touch the power cord with damp hands.
- **Before Servicing: Ice maker:** Move the ice maker control switch to the "OFF" position and turn off the power supply. Place the disconnect in the "OFF" position. Lockout/Tagout to prevent the power supply from being turned back on inadvertently. Control switch in "OFF" position does not de-energize all loads.
- **Dispenser:** Place the disconnect in the "OFF" position. Lockout/Tagout to prevent the power supply from being turned back on inadvertently.
- The manufacturer cannot be held responsible for injury or damage resulting from improper, incorrect, and unreasonable use or installation.
- **CHOKING HAZARD:** Ensure all components, fasteners, and thumbscrews are securely in place after the appliance is serviced. Make sure that none have fallen into the dispenser unit.
- Make sure all food zones in the icemaker and dispenser unit/ice storage bin are clean after service.

### Installation Instructions

- 1) Remove the icemaker front panel assembly. Place the control switch in the "OFF" position, then turn off the power supply. Lockout/Tagout to prevent the power supply from being turned on inadvertently.
- 2) Place the dispenser disconnect in the "OFF" position. Lockout/Tagout to prevent the power supply from being turned back on inadvertently.
- 3) Remove the dispenser front panel. Depending on which side the water valve is to be mounted, remove the left or right side panels. See Fig. 1.

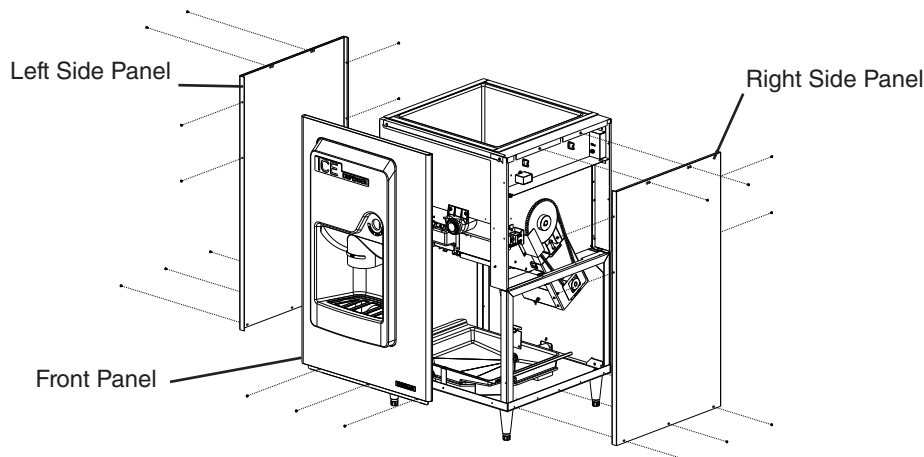
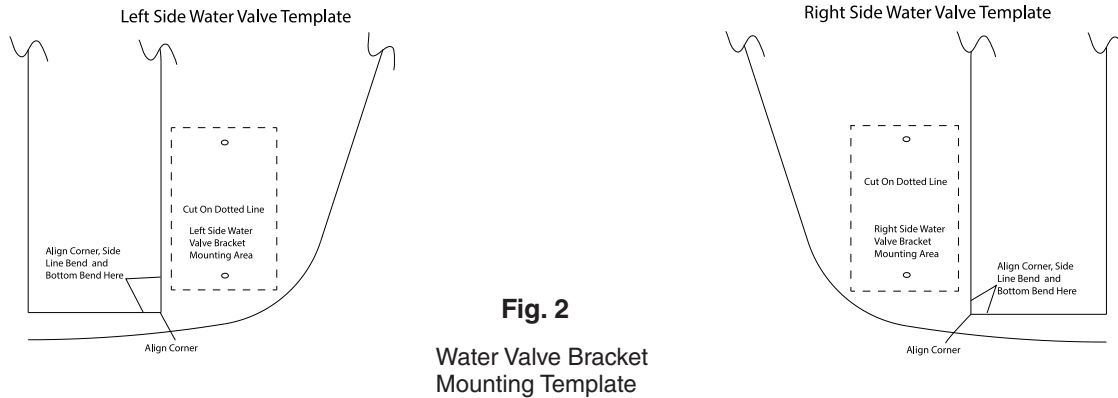


Fig. 1

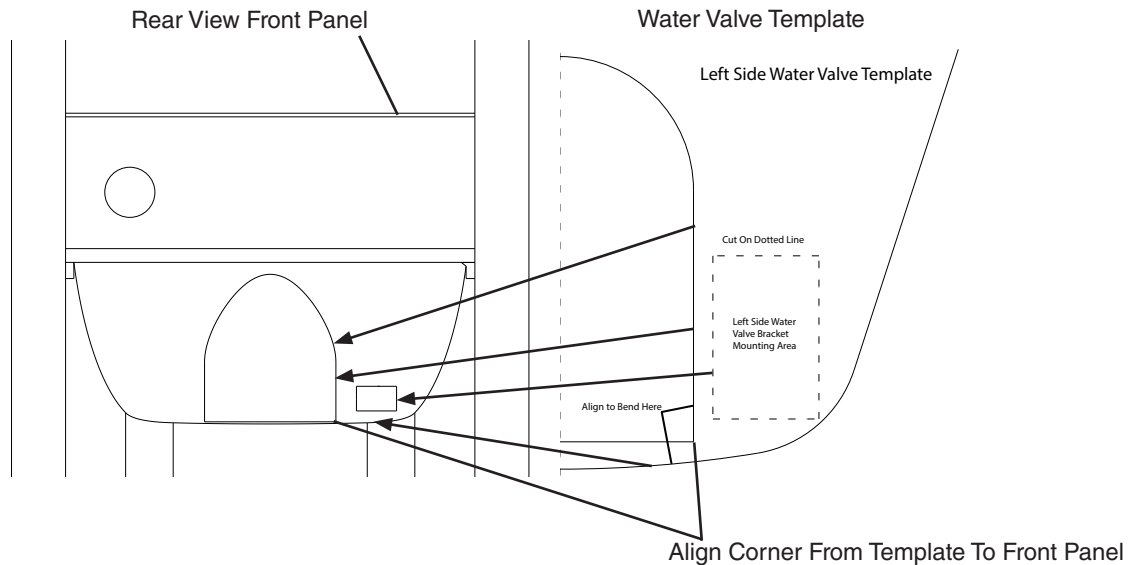
Model Shown: DB-200H

- 4) Access the backside of the dispenser front panel standing or lying down. **NOTICE!** When laying the dispenser front panel down, place the panel face down on a soft protective blanket to protect the panel from damage.

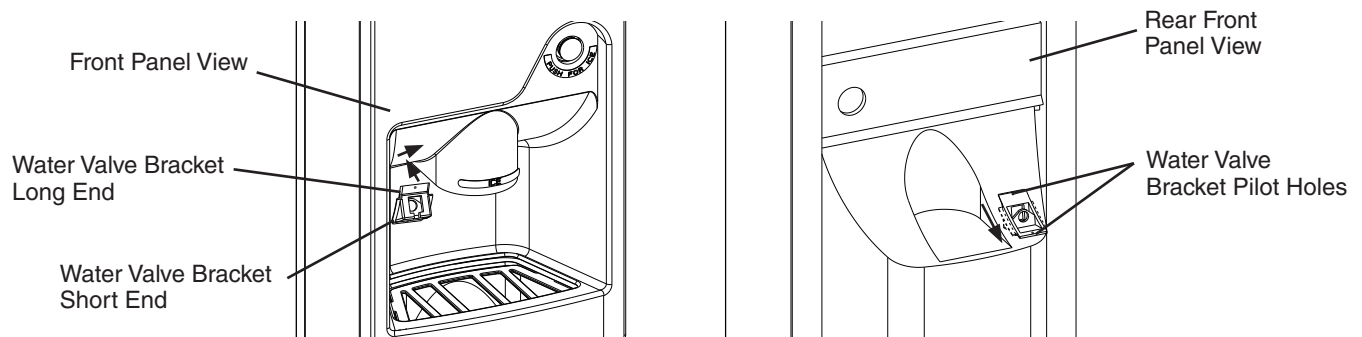
- 5) Locate the correct water valve mounting template provided in this kit (right or left side). Next, cut out the mounting square area of the correct model template shown in Fig. 2.



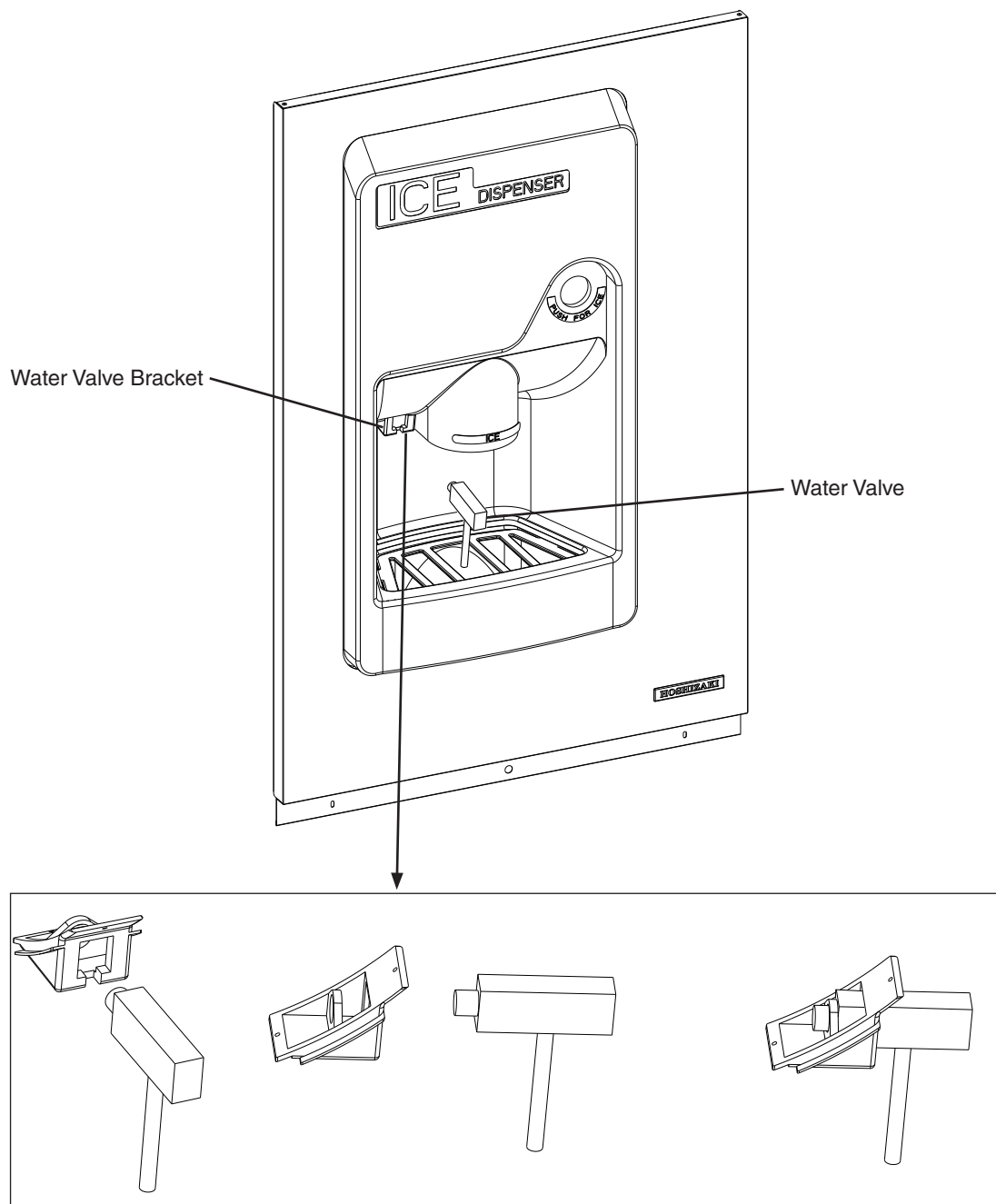
- 6) Using the correct model template from step 5, place and align the cut out template on the rear of the dispenser front panel as shown in Fig. 3. Be sure to correctly align the template bottom right hand corner to the lines shown on the template for accurate water valve mounting alignment. Tape the template in place and score the cut out area with a utility knife or use a pink marker to mark the cut out area.
- 7) Once the template is secured and/or marked, using a jig saw or dremel tool, cutout the dispenser front panel water valve access area. See Fig. 3. Deburr the cutout edges. **WARNING! The cutout area must be sanded and cleared of any jagged edges to prevent bodily injury or fit issues.**



- 8) Place the water valve bracket provided in this kit, in its correct position as follows: insert the water valve bracket up into the cutout area from the front of the front panel with the water valve bracket long end first. See Fig. 4. Next, slide it up and toward the front and press the water valve bracket shorter end up into the cutout area. Next, slide the water valve bracket down to the bottom of the cutout area until it fully seats at the lower end of the cutout area. Once the water valve is correctly seated, using the pilot holes on the mounting bracket drill two 1/8" (3 mm) holes.

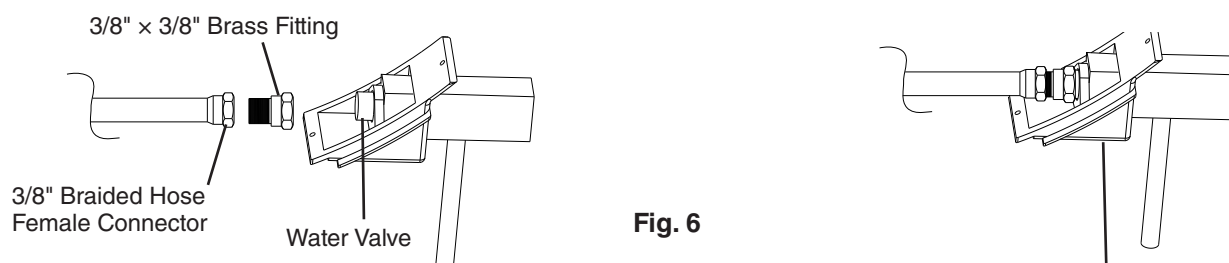


- 9) From the front side of the dispenser panel, secure and tighten the water valve bracket to the dispenser front panel using the screws provided in this kit.
- 10) Place the water valve provided in this kit, in its correct position in the water valve bracket. See Fig. 5.



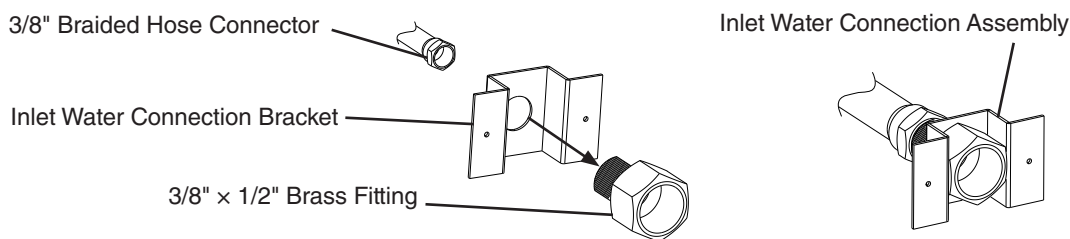
**Fig. 5**

- 11) Locate the 3/8" × 3/8" brass fitting provided in this kit, using proper plumbing practices, attach the 3/8" female side of the brass fitting to the 3/8" male threads of the water valve and tighten. Next, connect one end of the 3/8" braided hose female connectors to the 3/8" male brass fitting and tighten. See Fig. 6.



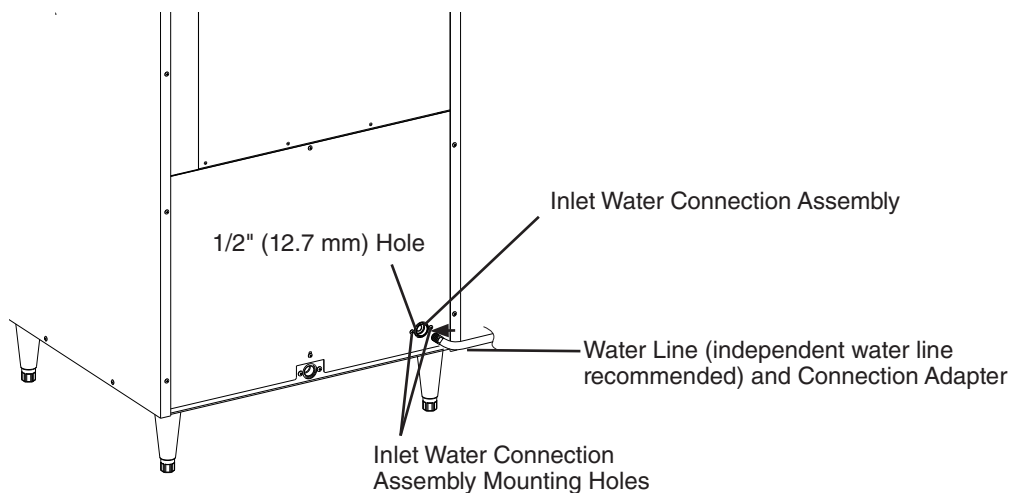
**Fig. 6**

- 12) Locate the inlet water connection bracket provided in this kit, using the inlet water valve connection bracket as a template, place the inlet water valve connection on to the rear panel of the dispenser and mark the 1/2" (12.7 mm) hole and the 2 mounting holes.
- 13) Drill the 1/2" (12.7 mm) hole into the rear panel, then using a 1/8" drill bit, drill 2 pilot holes where the mounting holes were marked.  
Note; The inlet water connection assembly may be mounted horizontal or vertical.
- 14) Locate the 3/8" x 1/2" brass fitting provided in this kit. Place the inlet water connection bracket on the 3/8" male side of the brass fitting as shown in Fig. 7. Then, inside the dispenser area, attach and tighten the open 3/8" braided hose connector to the 3/8" male brass fitting.  
**NOTICE! For ease of assembly and confirmation of secure connections, assemble the inlet water connection assembly prior to mounting it to the rear panel.**



**Fig. 7**

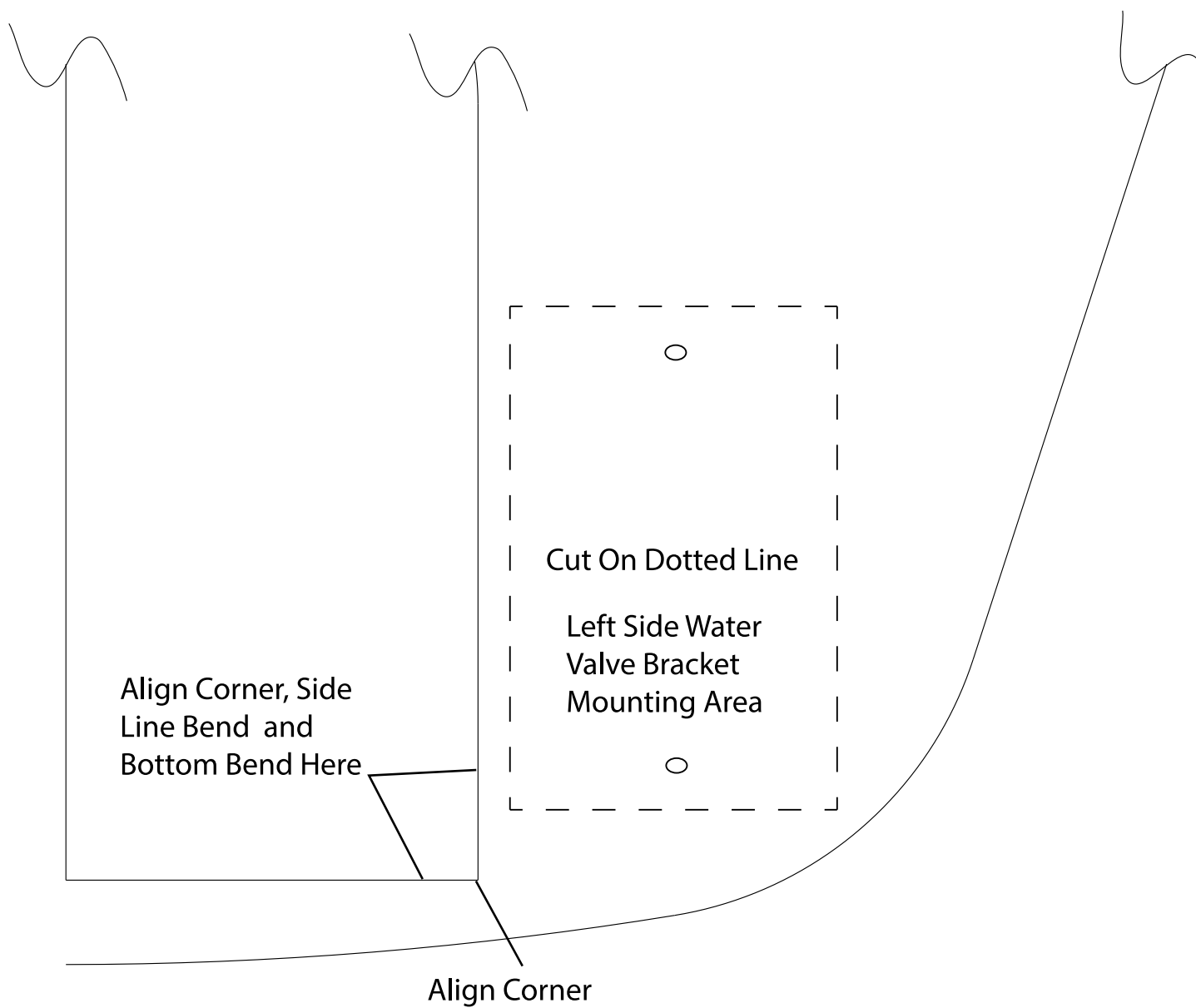
- 15) Route the inlet water connection assembly to the rear of the dispenser. Using 2 screws provided in this kit, secure the inlet water connection assembly to the rear panel. See Fig. 8
- 16) Connect the water supply line (independent water supply line recommended) to the 1/2" female brass fitting on the inlet water valve assembly installed in step 15.



**Fig. 8**

- 17) Open the water supply shut-off valve (independent water supply line recommended) and check for possible leaks.
- 18) Replace the dispenser front panel and side panel (right or left) in their correct positions and secure. If the appliance was moved to access the rear panel, replace the appliance back in its correct position. **NOTICE! Use care when moving the appliance to avoid damaging the water lines, electrical connections, and floor.**
- 19) Confirm water valve operation.
- 20) Turn on the dispenser power supply. Move the icemaker control switch to the "ON" position, then replace the icemaker front panel and turn on the icemaker power supply to start the automatic icemaking process.

# Left Side Water Valve Template



# Right Side Water Valve Template

